

TEMPORARY STEEL TEE-POST WITH TOP 2 FEET PAINTED BLUE

NEW DL-2240 COVER & RING WITH NO HOLES USE A LARGER RING WITH CONCRETE BARREL. TOP OF LID MUST BE SET 2% ABOVE THE BACK OF WALK OR CURB.

HYDRANT MUST BE LOCATED BETWEEN THE BACK OF THE CURB AND THE FRONT OF THE SIDEWALK IN THE PARK STRIP & NOT IN THE STREET

BLOW-OFF HYDRANT MUST BE NON-FREEZING, SELF DRAINING TYPE, OF SUFFICIENT LENGTH TO MEET THE BURY AND CLEARANCES SHOWN. HYDRANT MUST INCLUDE A 2" FIP INLET. ALL WORKING PARTS TO BE BRONZE-TO-BRONZE AND SERVICEABLE FROM ABOVE GRADE WITH NO DIGGING. MANUFACTURED BY KUPFERLE OR APPROVED EQUAL.

VARIES - SEE STREET SECTION

EQUAL 21" BARREL EQUAL

SIDEWALK 2%

CURB & GUTTER

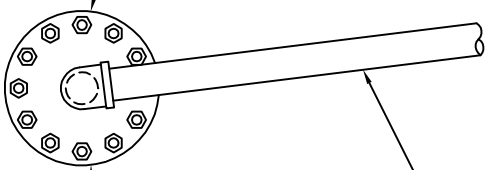
TRUFLO MODEL TF500 BLOW-OFF HYDRANT BY THE KUPFERLE FOUNDRY COMPANY

HANCOR 21" METER PIT BARREL (WHITE COLOR)

SEE CITY TRENCH DRAWINGS. MAINTAIN CONSTANT LATERAL COVER TO ALLOW EXCAVATION BETWEEN HYDRANT BARREL & WATER MAIN.

60" MINIMUM COVER

1. INSTALL A MEGA-LUG FLANGE & CAP ON THE END OF THE WATER MAIN.
2. DRILL-TAP THE CENTER OF THE CAP & INSTALL A 2" DIAMETER THREADED NIPPLE.
3. ATTACH THE 2" BLOW-OFF LATERAL TO THE NIPPLE WITH A 2"x 90 DEGREE BEND.



2" CTS POLY TUBING WITH TRACER WIRE

END CAP ON CITY WATER MAIN

MODEL TF500

WASHED GRAVEL

18"

36"

WASHED GRAVEL

DRAIN

UNDISTURBED EARTH

THRUST BLOCK

2" BRASS STREET "L" (NOT BY KUPFERLE)