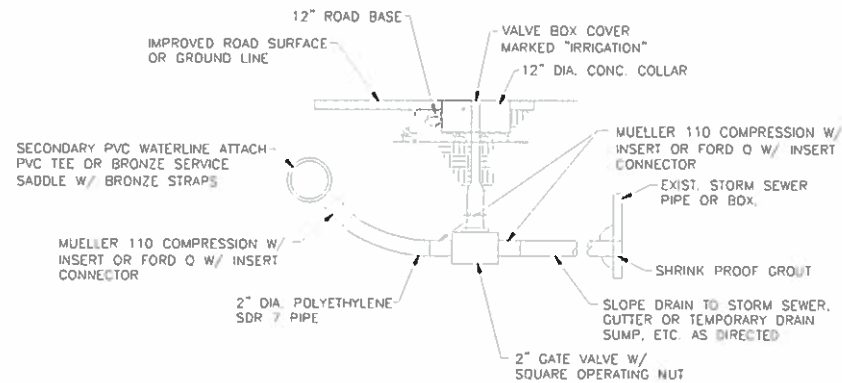
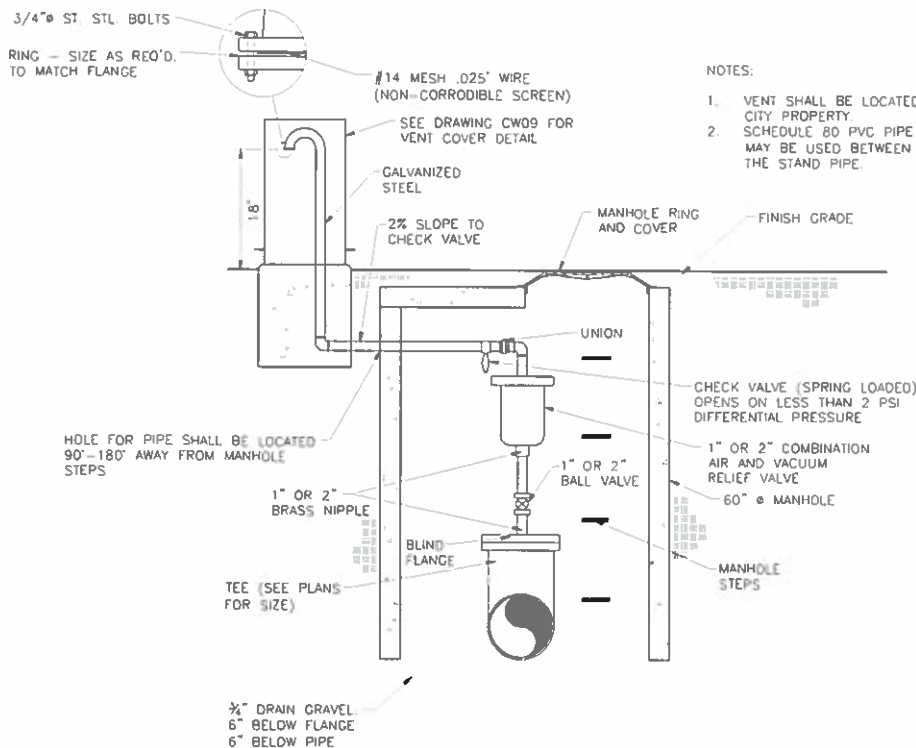


4" DRAIN VALVE DETAIL



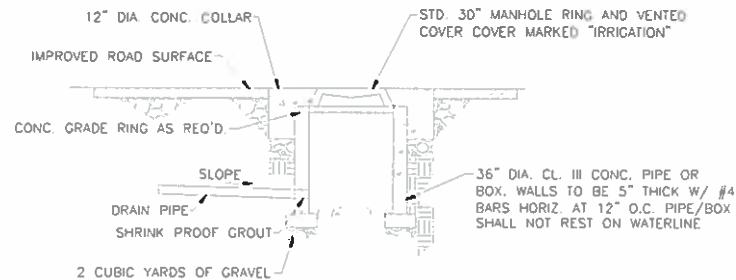
2" DRAIN VALVE DETAIL



1" & 2" AIR VACUUM RELIEF DETAIL

NOTES:

1. VENT SHALL BE LOCATED IN PARK STRIP OR CITY PROPERTY.
2. SCHEDULE 80 PVC PIPE OR GALVANIZED STEEL MAY BE USED BETWEEN AIR/VAC VALVE AND THE STAND PIPE.



TEMPORARY GRAVEL DRAIN SUMP DETAIL