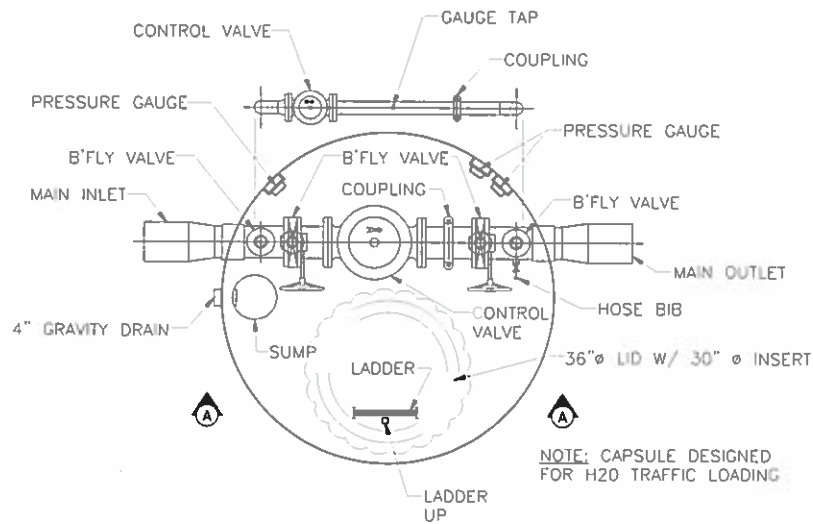


SECTION A-A



INTERIOR PLAN

NOTE: CAPSULE DESIGNED FOR H₂O TRAFFIC LOADING

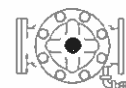
CONTRACTOR'S NOTES

DO NOT SHIM STATION. IT IS INTENDED THAT THE MAIN FLOOR MEMBERS BE IN CONTINUOUS CONTACT WITH THE CONCRETE PAD.

CONTRACTOR SHALL PROVIDE GALVANIZED STEEL MUSHROOM HEAD STYLE OR ELBOW STYLE VENT PIPING.

CONTRACTOR SHALL RUN POWER TO METER BASE.

PRV DETAIL



NIPPLE X ELBOW X NIPPLE X BALL VALVE W/ HOSE ADAPTER AND CAP INSTALLED IN FACTORY THREADED TAP ON DOWNSTREAM SIDE VALVE. IF THREADED TAP IS NOT FACTORY CAST, PROVIDE A HOSE BIB BETWEEN PRV AND GATE VALVE. DO NOT INSTALL ON GAGE TAP.

GENERAL NOTES

THE ACTUAL SIZE OF THE CONTROL VALVES, PIPES, AND BUTTERFLY VALVES WILL VARY DEPENDING ON FLOW REQUIREMENTS OF THE STATION.

ALL PIPING AND EQUIPMENT WILL BE ADEQUATELY SUPPORTED AND BRACED.

CAPSULE & STRUCTURAL STEEL: ASTM A-36.

STRUCTURAL TUBING: A500, GRADE B SCHEDULE 40 STEEL PIPE

MANUFACTURER REQUIRES A 3-4 MONTH LEAD TIME PRIOR TO DELIVERY OF PRV.

HYDE PARK CITY

113 EAST CENTER
HYDE PARK, UTAH 84318
TEL (435) 563-6507



**PRESSURE REDUCING
VALVE (PRV) EFI STATION**

CW-07A

DATE: 02-10-21