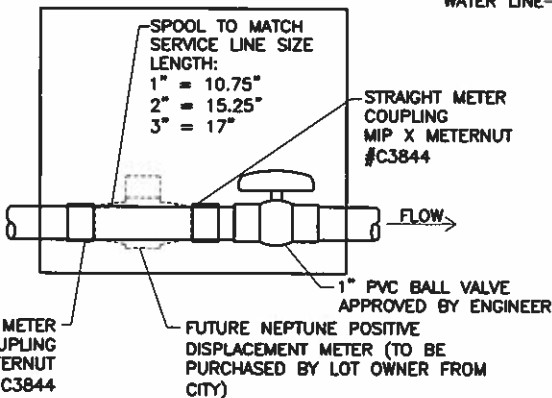


DETAIL A

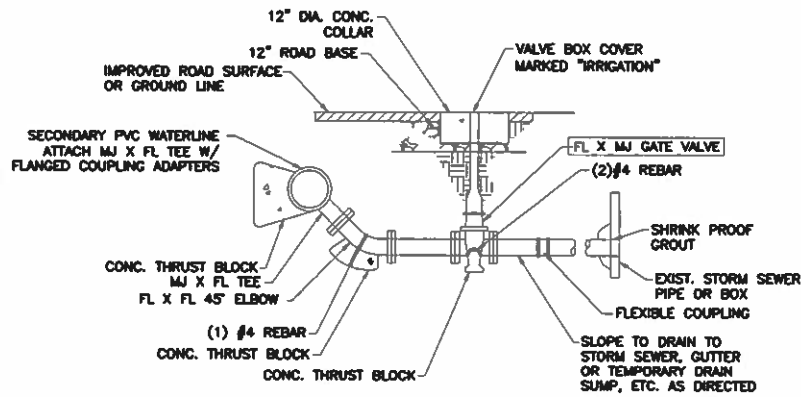


DETAIL B

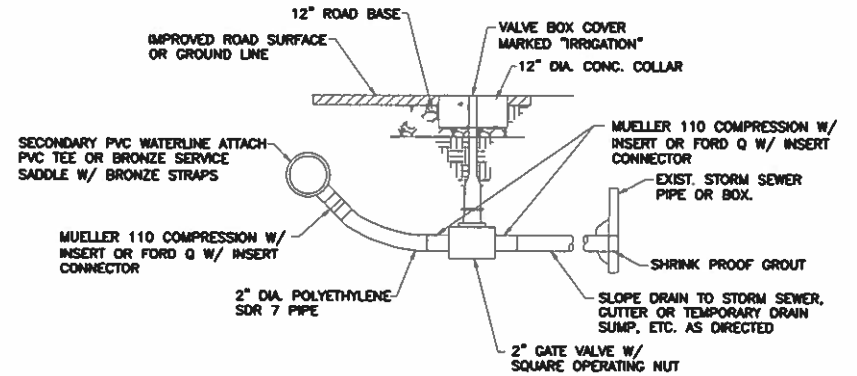
LOCAL - 60' RIGHT-OF-WAY

NOTES:

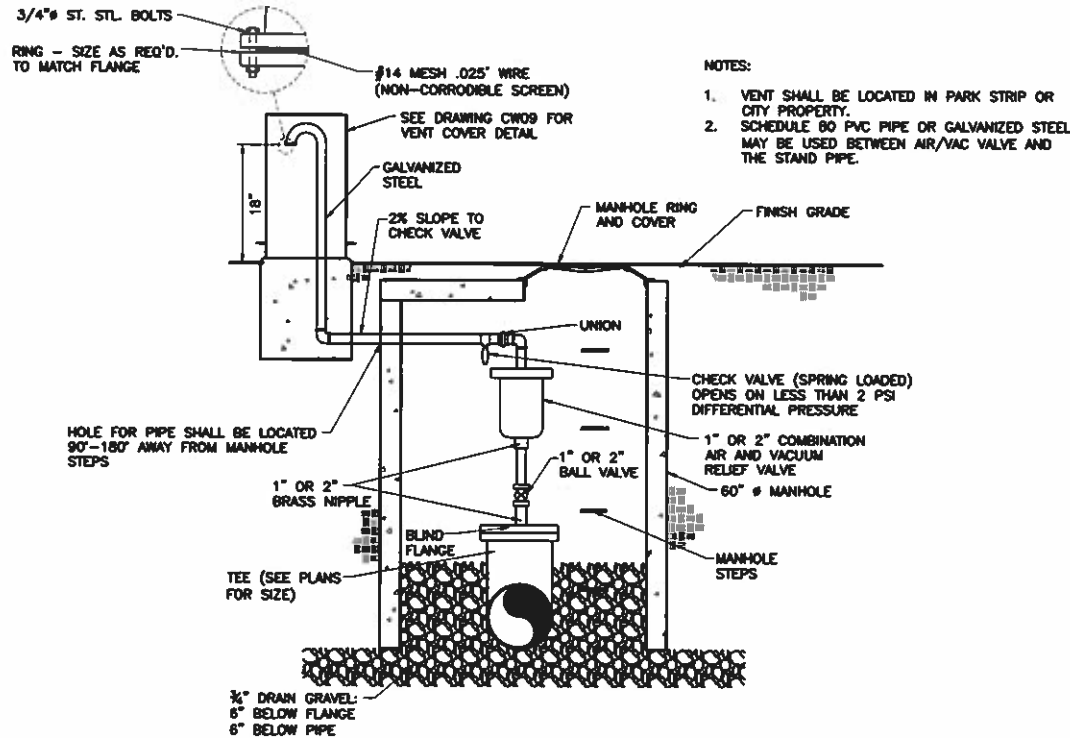
1. MINIMUM SURFACE RESTORATION SHALL BE 3" (OR EXISTING +1" IF GREATER) BITUMINOUS OVER 8" ROADBASE COMPACTED TO 95% AT MAJOR STREETS, CITY ENGINEER WILL PROVIDE PAVEMENT DESIGN.
2. SERVICES MAY BE TUNNELED OR JETTED UNDER CURB AND GUTTER, DRIVEWAYS, OR SIDEWALKS. OTHER STRUCTURES MAY BE OPEN CUT WITH FULL SURFACE RESTORATION AT THE ENGINEERS DISCRETION.
3. IF TAPPING SADDLES ARE USED, METHOD OF SAWING/DRILLING TAP HOLES, TYPE OF SADDLE, PROCEDURES MUST BE APPROVED BY THE ENGINEER PRIOR TO INSTALLATION.
4. POLYETHYLENE PIPE SHALL BE SDR-7-PE 3408 MANUFACTURED TO MEET THE REQUIREMENTS OF ASTM D-2737.
5. MAIN IRRIGATION LINES 6" OR 8" SHALL BE PVC PURPLE C-900. MAIN IRRIGATION LINES 10" AND LARGER SHALL BE DUCTILE IRON WITH PURPLE POLYETHYLENE WRAP.
6. ALL CONNECTIONS SHALL BE MADE WITH FORD Q W/ INSERT OR MUELLER 110 COMPRESSION W/ INSERT.
7. MINIMUM DISTANCE BETWEEN TAPS SHALL BE 24".
8. ALL PIPE SHALL BE BURIED WITH METALLIC LOCATOR TAPE AND TRACER WIRE 6" MIN. ABOVE THE PIPE TO ALL VALVES AND METER BOXES.
9. CONTRACTOR SHALL BE RESPONSIBLE FOR MEETING ALL OF THE REQUIREMENTS ESTABLISHED FOR SAFE TRENCHING. (SEE OSHA REQUIREMENTS)
10. ALL CONSTRUCTION SHALL COMPLY WITH HYDE PARK CITY STANDARDS, SPECIFICATIONS & ORDINANCES.
11. TRENCHING SHALL CONFORM TO CW-02.
12. ALL SECONDARY WATER LINES SHALL BE PRESSURE TESTED USING CULINARY WATER METHOD DISCUSSED IN THE COMMISSIONING OF WATER LINES IN SECTION 5 IF NO WATER IS AVAILABLE TO TEST AN AIR TEST MAY BE USED. AIR TESTS ARE REQUIRED TO HOLD 35 PSI FOR 2 HOURS.



4" DRAIN VALVE DETAIL



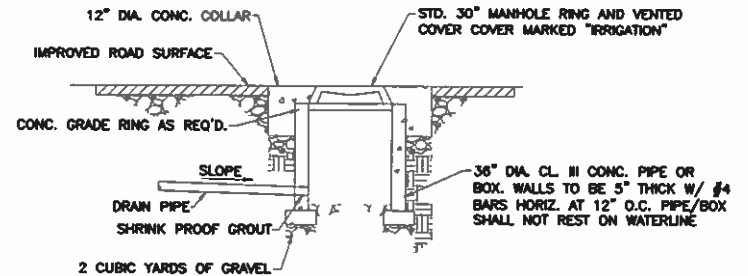
2" DRAIN VALVE DETAIL



1" & 2" AIR VACUUM RELIEF DETAIL

NOTES:

1. VENT SHALL BE LOCATED IN PARK STRIP OR CITY PROPERTY.
2. SCHEDULE 80 PVC PIPE OR GALVANIZED STEEL MAY BE USED BETWEEN AIR/VAC VALVE AND THE STAND PIPE.



TEMPORARY GRAVEL DRAIN SUMP DETAIL